

8 7 6 5 4 3 2 1

D

C

B

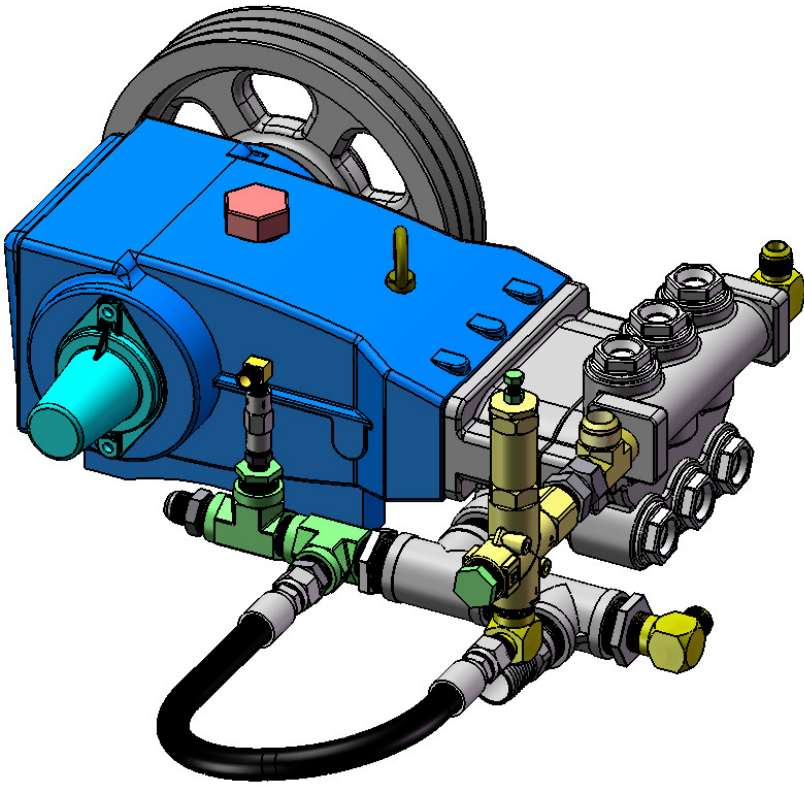
A

D

C

B

A



TYPHOON PUMP #1 UNLOADER AND PUMP INLET BYPASS ASSEMBLY

COPYRIGHT © 1995 OASIS CAR WASH SYSTEMS ALL RIGHTS RESERVED		DIMENSIONS IN [] ARE MILLIMETERS	UNLESS OTHERWISE NOTED BREAK ALL SHARP EDGES AND CORNERS .015 AND 64 μIN SURFACE FINISH ALL OVER
STANDARD TOLERANCES X.X = ± 0.063 X.XX = ± 0.015 X.XXX = ± 0.005 ANGLE = ± 0°30' FLATNESS = 0.05/FT		PROPRIETARY NOTICE THIS DOCUMENT CONTAINS CONFIDENTIAL AND TRADE SECRET INFORMATION, IS THE PROPERTY OF OASIS CAR WASH SYSTEMS, AND IS GIVEN TO THE RECEIVER IN CONFIDENCE. THE RECEIVER BY RECEPTION AND RETENTION OF THE DOCUMENT ACCEPTS THE DOCUMENT IN CONFIDENCE AND AGREES THAT, EXCEPT AS AUTHORIZED IN WRITING BY OASIS CAR WASH SYSTEMS, IT WILL (1) NOT USE THE DOCUMENT OR ANY COPY THEREOF OF THE CONFIDENTIAL OR THE TRADE SECRET INFORMATION THEREIN; (2) NOT COPY THE DOCUMENT (3) NOT DISCLOSE TO OTHERS EITHER THE DOCUMENT OR THE CONFIDENTIAL OR TRADE SECRET INFORMATION THEREIN; AND (4) UPON COMPLETION OF THE NEED TO RETAIN THE DOCUMENT, OR UPON DEMAND, RETURN THE DOCUMENT, ALL COPIES THEREOF, AND ALL MATERIAL COPIED THEREFROM.	
WARNING! THE EXPORT OR REEXPORT OF THIS DRAWING OR A PRODUCT PRODUCED BY THIS DRAWING IS SUBJECT TO U.S. EXPORT ADMINISTRATION REGULATIONS AND OTHER APPLICABLE GOVERNMENTAL RESTRICTIONS OR REGULATIONS.		MATERIAL NO.	SIZE
		HEAT TREAT	SURFACE
		ASSEMBLY	

 OASIS		1909 EAST 12th STREET GALENA, KS 66739 TEL: (800) 892-3537 TEL: (620) 783-1355 FAX: (620) 783-5735 www.oasiscarwashsystems.com	
COMPONENT UNLOADER RETRO - FITTING KIT			
QTY/ASSY	DWG NO B12358	REV A-03	
SCALE 1:4	BY	DATE	SHT 1 OF 3

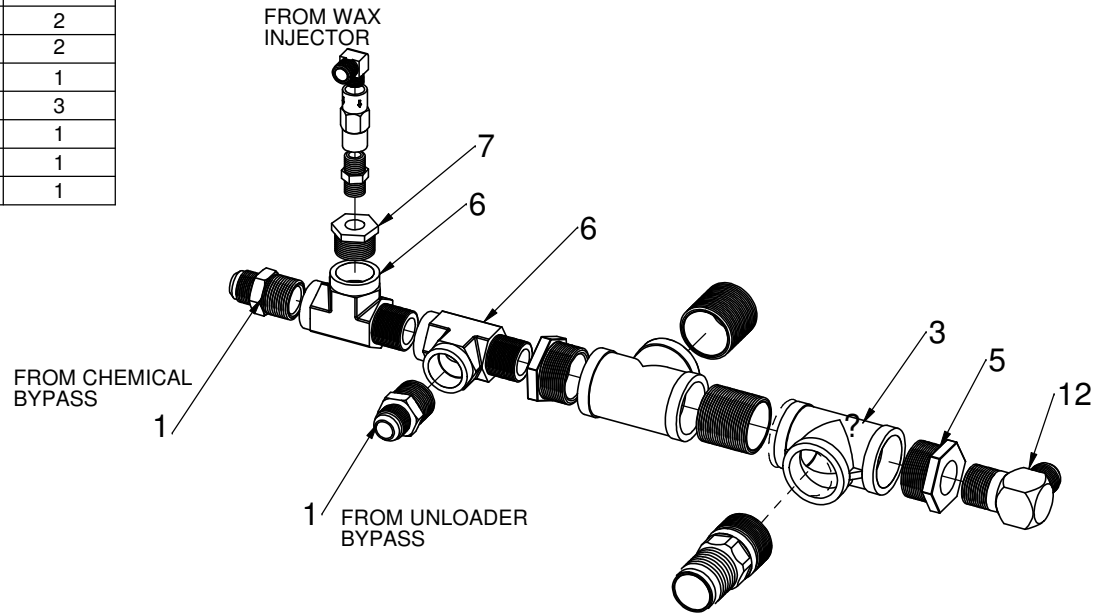
REV.	DESCRIPTION	DATE	APVD
REVISIONS			

8 7 6 5 4 3 2 1


REV A-03

DWG NO B12358

ITEM NO.	PART NUMBER	DESCRIPTION	Exploded 1 View/QTY.
1	A-1281	ADPTR MJIC STL 2404-12-16	2
2	A-4809	PLUG PIPE STL 1.00 MNPT	1
3	A-10043	TEE PIPE SST CSTG 1.50	2
5	A-10050	BSHG RDCR PIPE SST 1.50 X 1.00	2
6	A-5179	Tee Str Pipe Stl 5602-16	2
7	A-3654	BSHG RDCR PIPE STL 5406-16-6	1
12	A-9506	ADPTR MJIC STL 2501-12-16	3
13	A-12382	RUN TEE 2605-16-16-16	1
14	A-12408	PLUG SQ HD PIPE BRS 1.50	1
15	A-3427	ADPTR SWVL NUT STL 6505-16-16	1

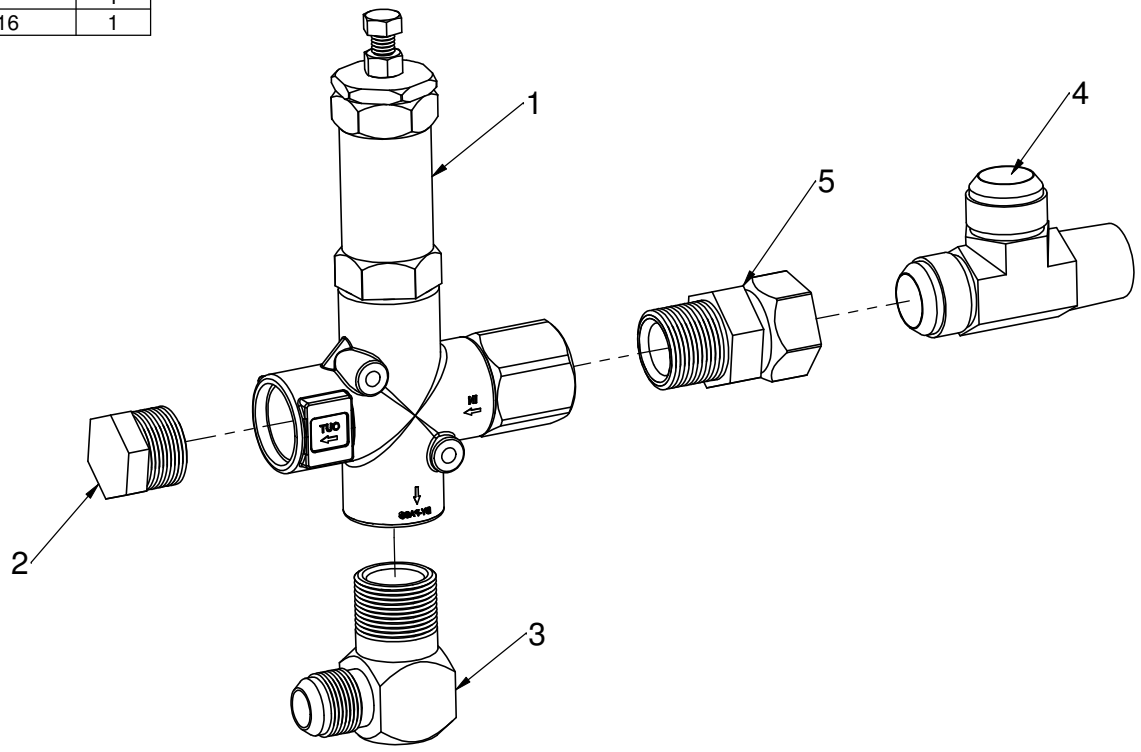


TYPHOON PUMP #1 PUMP INLET BYPASS ASSEMBLY


COPYRIGHT © 1995 OASIS CAR WASH SYSTEMS ALL RIGHTS RESERVED STANDARD TOLERANCES X.X = ± 0.063 X.XX = ± 0.015 X.XXX = ± 0.005 ANGLE = ± 0°30' FLATNESS = 0.05/FT WARNING! THE EXPORT OR REEXPORT OF THIS DRAWING OR A PRODUCT PRODUCED BY THIS DRAWING IS SUBJECT TO U.S. EXPORT ADMINISTRATION REGULATIONS AND OTHER APPLICABLE GOVERNMENTAL RESTRICTIONS OR REGULATIONS.	DIMENSIONS IN [] ARE MILLIMETERS UNLESS OTHERWISE NOTED BREAK ALL SHARP EDGES AND CORNERS .015 AND 64 µIN SURFACE FINISH ALL OVER	 1909 EAST 12th STREET GALENA, KS 66739 TEL: (800) 892-3537 TEL: (620) 783-1355 FAX: (620) 783-5735 www.oasiscarwashsystems.com	
	PROPRIETARY NOTICE THIS DOCUMENT CONTAINS CONFIDENTIAL AND TRADE SECRET INFORMATION, IS THE PROPERTY OF OASIS CAR WASH SYSTEMS, AND IS GIVEN TO THE RECEIVER IN CONFIDENCE. THE RECEIVER BY RECEPTION AND RETENTION OF THE DOCUMENT ACCEPTS THE DOCUMENT IN CONFIDENCE AND AGREES THAT, EXCEPT AS AUTHORIZED IN WRITING BY OASIS CAR WASH SYSTEMS, IT WILL (1) NOT USE THE DOCUMENT OR ANY COPY THEREOF OF THE CONFIDENTIAL OR THE TRADE SECRET INFORMATION THEREIN; (2) NOT COPY THE DOCUMENT (3) NOT DISCLOSE TO OTHERS EITHER THE DOCUMENT OR THE CONFIDENTIAL OR TRADE SECRET INFORMATION THEREIN; AND (4) UPON COMPLETION OF THE NEED TO RETAIN THE DOCUMENT, OR UPON DEMAND, RETURN THE DOCUMENT, ALL COPIES THEREOF, AND ALL MATERIAL COPIED THEREFROM.		
MATERIAL MATERIAL NO. SIZE HEAT TREAT SURFACE ASSEMBLY			COMPONENT UNLOADER RETRO - FITTING KIT
QTY/ASSY SCALE 1:4		DWG NO B12358	REV A-03
BY _____ DATE _____		SHT 2 OF 3	

REV A-03
DWG NO. B12358

ITEM NO.	PART NUMBER	DESCRIPTION	EXPLODED 2/QTY.
1	A-4490	VLV PRESS REG BRASS 1" UNLOADER PS	1
2	A-4809	PLUG PIPE STL 1.00 MNPT	1
3	A-9506	ADPTR MJIC STL 2501-12-16	1
4	A-12382	RUN TEE 2605-16-16-16	1
5	A-3427	ADPTR SWVL NUT STL 6505-16-16	1



TYPHOON PUMP #1 UNLOADER ASSEMBLY

COPYRIGHT © 1995 OASIS CAR WASH SYSTEMS ALL RIGHTS RESERVED STANDARD TOLERANCES X.X = ± 0.063 X.XX = ± 0.015 X.XXX = ± 0.005 ANGLE = ± 0°30' FLATNESS = 0.05/FT	DIMENSIONS IN [] ARE MILLIMETERS	UNLESS OTHERWISE NOTED BREAK ALL SHARP EDGES AND CORNERS .015 AND 64 μIN SURFACE FINISH ALL OVER	 1909 EAST 12th STREET GALENA, KS 66739 TEL: (800) 892-3537 TEL: (620) 783-1355 FAX: (620) 783-5735 www.oasiscarwashsystems.com
	PROPRIETARY NOTICE THIS DOCUMENT CONTAINS CONFIDENTIAL AND TRADE SECRET INFORMATION, IS THE PROPERTY OF OASIS CAR WASH SYSTEMS, AND IS GIVEN TO THE RECEIVER IN CONFIDENCE. THE RECEIVER BY RECEPTION AND RETENTION OF THE DOCUMENT ACCEPTS THE DOCUMENT IN CONFIDENCE AND AGREES THAT, EXCEPT AS AUTHORIZED IN WRITING BY OASIS CAR WASH SYSTEMS, IT WILL (1) NOT USE THE DOCUMENT OR ANY COPY THEREOF OF THE CONFIDENTIAL OR THE TRADE SECRET INFORMATION THEREIN; (2) NOT COPY THE DOCUMENT; (3) NOT DISCLOSE TO OTHERS EITHER THE DOCUMENT OR THE CONFIDENTIAL OR TRADE SECRET INFORMATION THEREIN; AND (4) UPON COMPLETION OF THE NEED TO RETAIN THE DOCUMENT, OR UPON DEMAND, RETURN THE DOCUMENT, ALL COPIES THEREOF, AND ALL MATERIAL COPIED THEREFROM.		
WARNING! THE EXPORT OR REEXPORT OF THIS DRAWING OR A PRODUCT PRODUCED BY THIS DRAWING IS SUBJECT TO U.S. EXPORT ADMINISTRATION REGULATIONS AND OTHER APPLICABLE GOVERNMENTAL RESTRICTIONS OR REGULATIONS.	MATERIAL NO. HEAT TREAT ASSEMBLY	SIZE SURFACE	COMPONENT UNLOADER RETRO - FITTING KIT
QTY/ASSY SCALE 1:4	DWG NO B12358	REV A-03	SHT 3 OF 3

DWG NO. B12358
REV A-03